

Grades 5 - 8

Duration: 2 X 45 min

Tools: one Logifaces set / person

Individual work

Keywords: Visual display of things seen, Direct visual observation, Spatial representation

Logifaces and shading



**ART/ The characteristics of art
tools and visual impact**



LOGIFACES
METHODOLOGY
Erasmus+

TEACHER
Logifaces

2019-1-HU01-KA201-0612722019-1

DESCRIPTION

LESSON 1 The students assemble a composition from Logifaces blocks. Then as the first step they draw a line sketch of the composition focusing on forms, relationships and proportions.

LESSON 2 They depict their piece of work with a strong side light, so that it projects intense shadows. They draw the compositions and its shadows in pencil. The students should observe how light creates different tones and how the drawing becomes 3D due to the shadows.

GUIDELINES / EXPECTATIONS

INSPIRATION Dürer's and Leonardo's geometrical study, László Moholy-Nagy's geometric abstractions

<https://lifethroughamathematicianseyes.wordpress.com/2018/01/24/leonardo-da-vincis-geometric-sketches/>

TECHNIQUE freely chosen graphic art technique

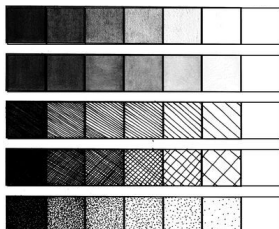
OBJECTIVE to develop a sense of proportions, form and material

PRIOR KNOWLEDGE

Basic graphic art technique skills, such as hatching, cross-hatching, blending, smudging, stippling, dot effects, rhythmic lines

RECOMMENDATIONS / COMMENTS

PREFIGURATION



Leonardo da Vinci: Geometric sketches, 1490

STUDENT WORK

Experience Workshop, Jyväskylä & Lauder Javne School, Budapest

